



Carlisle Avenue, W3

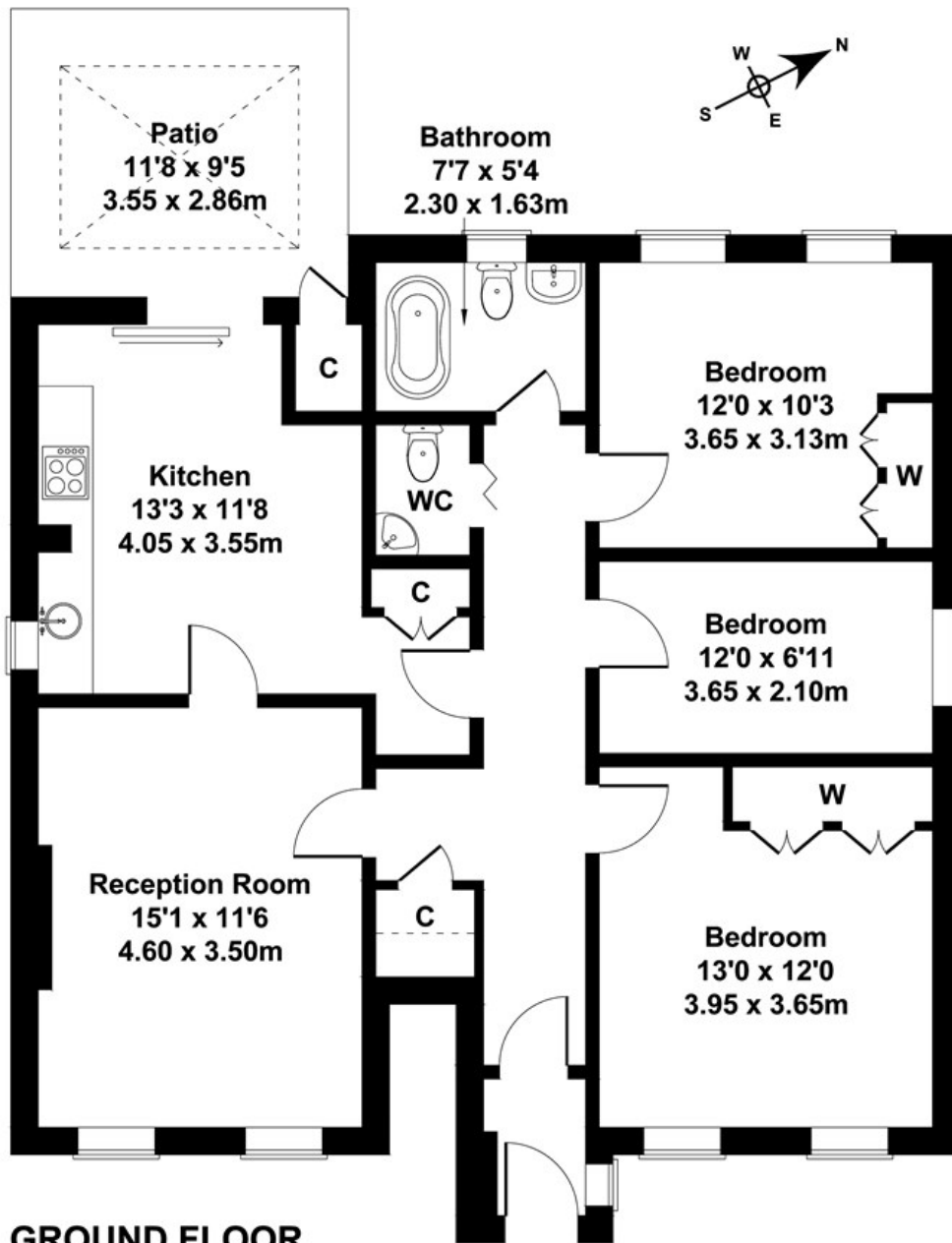
LONG LET. This three bedroom flat boasts a modern interior and is situated perfectly for local amenities and transport links.

- Available 19th January 2026
- Outside space
- Three double bedrooms
- Separate kitchen
- Close to local transport
- Great location

£2,400 PCM

Carlisle Court

Approximate Gross Internal Area
958 sq ft - 89 sq m



GROUND FLOOR

Not to Scale. Produced by The Plan Portal 2021
For Illustrative Purposes Only.

Energy Efficiency Rating		
	Current	Potential
Very energy efficient - lower running costs		
(92 plus) A		
(81-91) B		
(69-80) C		
(55-68) D		
(39-54) E		
(21-38) F		
(1-20) G		
Not energy efficient - higher running costs		
England & Wales	EU Directive 2002/91/EC	